



Turning Dreams Into Reality Since 1976

WINTER 2007

WELCOME!

T SQUARE REMODELING

- Unique, innovative designs
- Experienced craftsmen
- Quality finishes

10600 NE 94th Avenue
Vancouver, WA 98662

(360) 256-3946

mail@tsquareremodeling.com
www.tsquareremodeling.com

LIC# TSQUARI055JE

IN THIS ISSUE:

- Beatty Kitchen Addition
- Ask The Remodeler
- Ladder Safety Tips
- Referral Reward Program

JOB of the SEASON: *Beatty Kitchen Addition*

Highlights included:

- New kitchen addition
- Better utilization of main living space
- Take advantage of the view of Mt. Hood

The client's main objective of the remodel was to create a gourmet kitchen and take advantage of the beautiful view of Mt. Hood. The kitchen addition allowed the remaining rooms of the main living area to be redesigned for better utilization.

The layout of the existing house only partially allowed for the view of Mt. Hood and was limited in floor space. By adding the large kitchen addition at a right angle to the existing house, we were able to fully capture the view and create more space for the clients to entertain in. An atrium door off the new eating nook opens to the existing deck where the clients frequently host parties. The existing kitchen was

(continued on Page 3)



BEFORE



AFTER



BUILDING INDUSTRY ASSOCIATION
of Southwest Washington



ASK *the* REMODELER

It's the holiday season once again and that means it's time for Christmas lights. In 2004 there were 547,000 people treated at medical facilities for ladder related injuries in the US. I recently observed my neighbor and best friend putting up his lights, standing on top of his ladder stretched as far as he could to reach the gable end of his house. I heard of another local person that jumped off his falling ladder, which resulted in a shattered ankle and broken leg, while taking down his Christmas lights. For that reason and a couple client emails, this "Ask the Remodeler" will be about ladder safety to hopefully avoid more broken bones.

Q. My husband insists on putting lights clear up on the ridge of our house and I am really worried he is going to fall. I noticed your crew using safety lines when they were here and wondered where I could purchase some and what did you have them hooked to?

A. *Talk about a gift that says you care! Our crews use a safety harness that connects to a safety line that is fastened to a bracket attached to the roof. The brackets we use are temporary and we remove them when we leave. However there are brackets that are designed for permanent installation and to be left on the roof. In addition to the safety line and bracket you will need to purchase a harness and a lanyard. Parr lumber has the complete set up including the instructions on proper usage.*

Q. Would it be possible to add some exterior electrical plugs for my Christmas lights that I could go out to the power box to turn on and off?

A. *The answer is yes, however it would be better to install a switch to control the plugs rather than using a breaker in your power panel. I am sure that one of the electricians we use would be glad to install some switched plugs for you.*

IF YOU HAVE A QUESTION FOR "ASK THE REMODELER" SEND IT TO:

Email: Questions@tsquareremodeling.com

Fax: (360) 892-1938

Mail: T Square Remodeling, Inc.,

10600 NE 94th Ave., Vancouver, WA 98662

LADDER SAFETY TIPS

1. Buy a good ladder. Every year I observe people risking life and limb on step ladders with spindly legs about the size of a pool cue. Good ladders are rated as to the size of the person they will handle.
2. Set your ladder up on something solid, such as concrete or a plank.
3. If you are using an extension ladder secure it to the gutter or another immovable object so it can't slide sideways. Our crews often use a rubber snubber wrapped around the ladder and hooked into the gutter.
4. If you are going to climb up on the roof of your house, the ladder should extend at least 3 feet above the gutters.
5. Follow the belt buckle rule: Keep you belt buckle between the uprights of the ladder. If you have to reach further than that – move the ladder.
6. Do not stand on the top step of the ladder or on the shelf that is designed for your paint bucket.



CONGRATULATIONS!

To our Referral Reward Winners:
DON AND SHERRY STOSE

They were the winners of the Referral Reward Program giveaway for the first half of the year. Don and Sherry have received a Sportsman's Warehouse gift certificate for their participation.

We really appreciate the referrals. Keep them coming and you could be the next winner of our drawing!



BEFORE

JOB of the SEASON *(continued from Page 1)*

converted into a wet bar/pantry and provides ample storage for food, wine, small appliances, and table linens. A new coat closet and decorative screen help define the existing entryway while maintaining an open feel. The new addition and redesigned floor plan is bright and spacious with a breathtaking view that can be appreciated from every room.

By installing clerestory windows, the

new kitchen captures light from the west while preserving wall space for cabinets. They provide excellent ventilation, and also creates a pleasant overall glow. A built-in baking center with bi-fold doors and a continuous countertop keeps everything within arms reach but behind closed doors. The baking area is now where everything is readily accessible but hidden from sight. The kitchen also features an island with a prep sink that looks like a piece of furniture. The natural maple wood and open structure sets it apart from the other cabinets and creates an object of interest in the large kitchen.

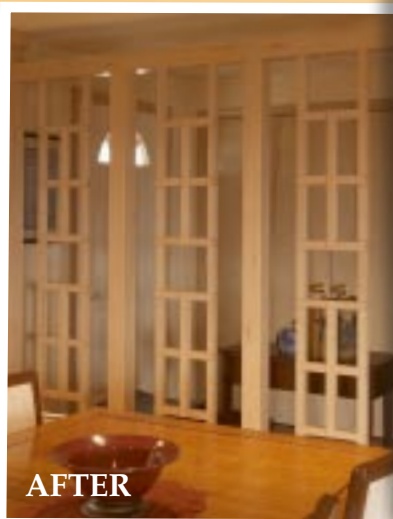
This job contains many unique features that help give the kitchen a real sizzle. Birch flooring ties the existing house to the addition and creates a continuous flow throughout the space. Dark stained maple cabinets, with the exception of the natural maple island, help balance the amount of light in the bright kitchen. In contrast, the light maple cabinets in the wet bar/pantry help brighten the dark space. Reed glass in the upper cabinets moderately conceals dishes and adds a variety of shapes and colors to the kitchen. Low maintenance was important to the clients so solid surface countertops were installed. Light toned countertops contrast with the dark kitchen cabinets and dark green countertops accent the island and wet bar/pantry cabinets. Tile backsplashes help pull all the colors together. The kitchen also features stainless steel appliances, plumbing fixtures, door hardware and light fixtures.



AFTER



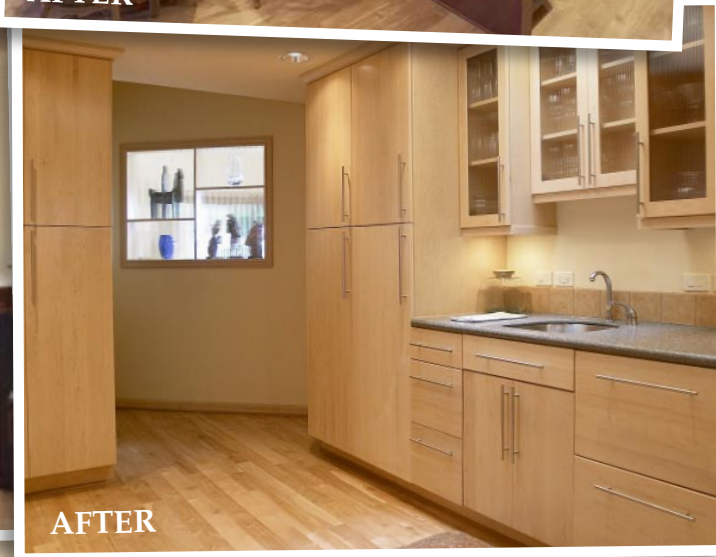
AFTER



AFTER



AFTER



AFTER

REFERRAL REWARD PROGRAM

As our way of saying **THANK YOU** for referring your friends, neighbors and work associates to us, we are offering this Referral Reward Program. For each referral received, we will put your name in a drawing for a free night's stay and meal for two at either Skamania Lodge, Bonneville Hot Springs or Kahneeta Resort. Use this form to make sure you get credit for all of your referrals (if you need more room, you can use a separate sheet a paper). If you have any questions, just give us a call at (360) 256-3946.

YOUR NAME _____ YOUR PHONE _____

Referral #1: Name _____
Address _____
City, State, Zip _____ Home Phone _____

Referral #2: Name _____
Address _____
City, State, Zip _____ Home Phone _____

YES! Feel free to use my name as a reference when you contact the referrals!

Mail to: T Square Remodeling, 10600 NE 94th Ave., Vancouver, WA 98662 **or fax to:** (360) 892-1938

-- NOTE --

We're always updating our website:

www.tsquareremodeling.com

Check to see if your job might even be on it.

**We're entering a home in the
2007 REMODELED HOMES TOUR!**

Saturday and Sunday, May 19-20, 2007

(Viewing locations and times to come)

T SQUARE REMODELING, INC.

10600 NE 94th Avenue

Vancouver, WA 98662

Turning Dreams Into Reality Since 1976

